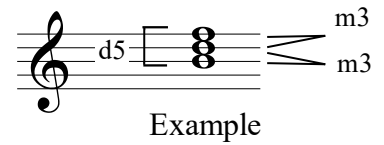


# Root Position Diminished Triads

A root-position **diminished triad** is composed of three notes stacked in thirds.

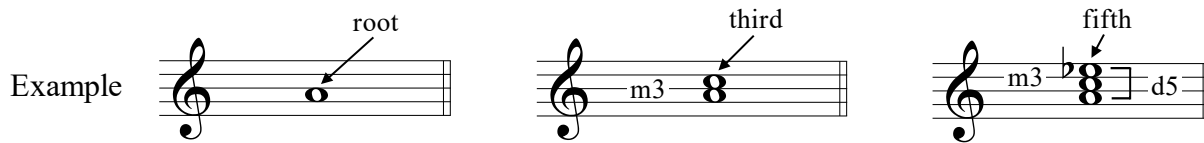
The interval between the bottom two notes (root and third) is a minor third (**m3**).  
 The interval between the top two notes (third and fifth) is also a minor third (**m3**).  
 The interval between the bottom and top notes (root and fifth) is a diminished fifth (**d5**).



Answers in this exercise are limited to **close root-position diminished triads**.

1. Create close root-position diminished triads using the provided notes as roots.

Create the third of the triad by adding a note a m3 above the root.  
 Create the fifth of the triad by adding a note a d5 above the root (a m3 above the third).



1 	2 	3 	4 
5 	6 	7 	8 

2. Triad position is indicated for each of the notes below.  
 Add notes to create close root-position diminished triads.

1  fifth	2  third	3  fifth	4  root
5  fifth	6  third	7  root	8  fifth